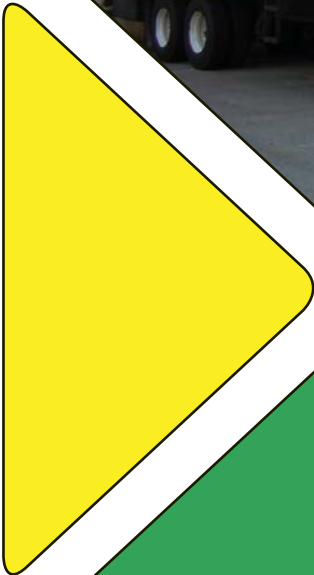
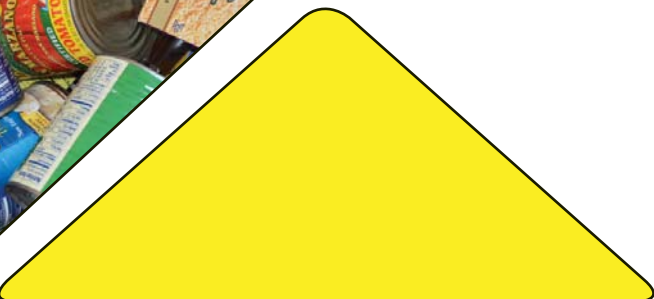
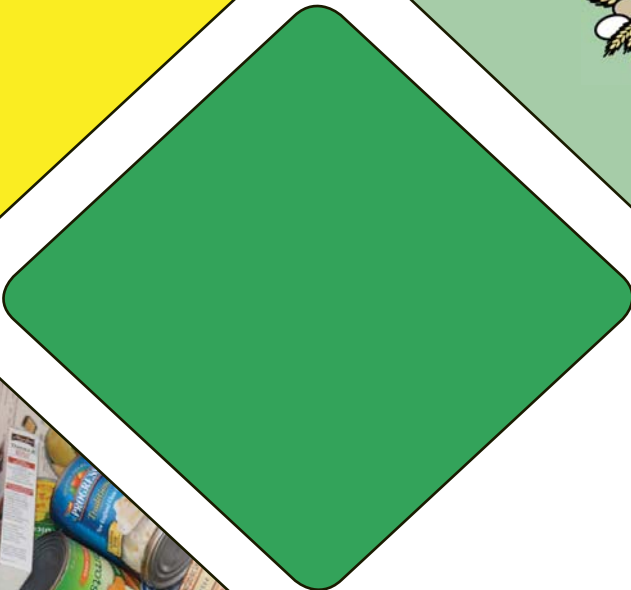


2017

annual report



**Regional
Food Bank**
OF NORTHEASTERN NEW YORK



Regional Food Bank of Northeastern New York
Board of Directors
2017 - 2018

President: Larry Schillinger
Schillinger Environmental Associates LLC

1st Vice President: Carey Alberg
John Deere Company

2nd Vice President: Jim Santamarina
BJ's Wholesale Club

Secretary: Kyle Rueckert
CBRE Albany

Treasurer: Sarah Robinson
Teal, Becker & Chiamonte CPAs

Dorcey Appllys
City of Albany

Jill August
Wells Fargo

Charlotte Carter
Community Food Pantry - Coxsackie

James Cole
BST & Co. CPAs, LLP

Heather Diddel
Whiteman Osterman & Hanna

John Evers
The Business Council of NYS

Emily Getty
Stonyfield Farm

Phil Giltner
Community Volunteer

Suzanne Gunther
CleverShove Marketing

Tim Kensky
Bank of America Merrill Lynch

Mike Lofrumento
Trustco Bank

Nils Lundberg
Price Chopper/Market 32

Maryann McGeorge
Comfort Food Community

Molly Nicol
Albany Medical Center

Debra Pollard
Fenimore Asset Management

Joel Riley
Hannaford Supermarkets

Mike Rosen
Food Industry Alliance of NYS

Marty Shields
Bouchey Financial Group

Sr. Betsy Van Deusen
Catholic Charities of the Diocese
of Albany

Annette Vermilyea
Cascades Containerboard
Packaging

Andy Walton
Walmart Distribution Center 6096

Brian Wolters
Sunmark Federal Credit Union

table of contents

highlights from 2017	3-4
fundraising events & appeals	5
food donors and drives	6
financial donors	7-8
time and talent donors	9-10
financials	11
member agencies	12-13
thank you	14

Food Bank of the Hudson Valley
2017 - 2018 Advisory Board

Howard Protter, Chair
Jacobowitz & Gubits

Nick Citera
Cosimo's Restaurant
Management Group

Elisa DiBrizzi
Cosimo's Restaurant
Management Group

Michael Foglia
Ship Lantern Inn

Michael L. Fox, Esq.
Mount Saint Mary College

CJ Hartwell-Kelly
Buttermilk Falls Inn & Spa

Amy Hepworth
Hepworth Farms

Dagan Lacorte
L&L Partners Wealth
Management

Barbara Malley
Community Volunteer

John F. Rath, III
Lakeland Bank

Steve Turk
Rocking Horse Ranch Resort/
Splash Down Beach Water Park

William F. Vacca
Walden Savings Bank

Antonio J. Vinciguerra
TD Bank

The mission of the Regional Food Bank is to alleviate hunger and prevent food waste.

We work toward this mission by ensuring that all products available for donation reach the Food Bank and are distributed judiciously to our member agencies.

from the directors


Dear Friends,

At the Regional Food Bank, we expanded our outreach, made many new friends, and did more than ever to help our hungry neighbors in 2017. We had a tough beginning to the year because we were in the middle of our expansion project and our offices and distribution dock were torn up. But we worked through the challenges, and by the second half of the year were utilizing the new space and operating much more efficiently. We thank everyone who has supported this expansion project with financial and in-kind support, and look forward to completing our capital campaign soon.

We are proud and grateful that we were able to provide 38 million pounds of food to our member agencies in 2017, enough for 31 million meals. Equally rewarding is knowing the quality of that food continued to improve, with 80% consisting of meat, fruits and vegetables, dairy products, and other nutritious food. I constantly hear from agencies that the fresh produce we provide is highly desired and greatly appreciated by the people they serve, and that they could never serve so many people in need if not for the Food Bank.

We are committed to continue upgrading everything we do in 2018. I thank our dedicated staff, Board of Directors, volunteers, and food and financial donors for caring so deeply and contributing so generously to our work.

Sincerely,



Mark Quandt
Executive Director



Photo by Vincent Giordano Photography

Dear Friends,

In my short time with the Food Bank, I have had the great privilege to be reminded, over and over again, why this region is such a special place to live, work and raise a family.

Every day, thousands of people in the Hudson Valley struggle with food insecurity – working families, senior citizens, children, even veterans.

In response, thousands of people contribute time, financial support or food donations to help out friends and neighbors in need.

Some people are motivated by their own experiences with hunger (“I know how powdered milk tastes,” said one of our long-time volunteers). Other folks simply recognize that a daily meal is a basic human right, and that our communities are so much stronger and healthier when we all have what we need to thrive.

It is a privilege to see this compassion on display as we work to alleviate hunger in the Hudson Valley. Thank you for inspiring us – and for giving us hope.

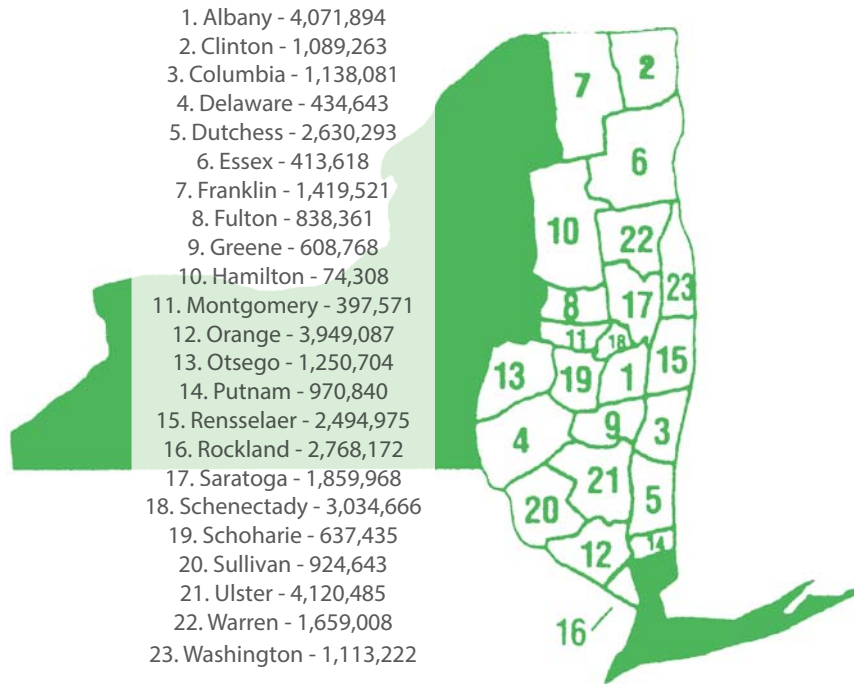


Paul A. Stermer
Director, Food Bank of the Hudson Valley

highlights from 2017

distribution

- 37,899,527 pounds distributed to agencies in 23 counties
- Equivalent to 31,582,939 meals
- 14,648 agency orders placed and fulfilled in 2017



mass distributions

Provide large quantities of nutritious food including produce, dairy products, and beverages to low-income people above and beyond what they receive from food pantries

- 29 Mass Distribution sites
- 334 distributions totaling 3,896,498 pounds

product deliveries

Food orders are delivered to many agencies located at a distance from the Food Bank, helping them get more food and reduce transportation costs

In 2017, we made 430 deliveries totaling 15,777,806 pounds.

food bank of the hudson valley

- 377 agencies served
- 1,460 volunteers provided 8,483 hours of service in 2017

food sourcing

- 1,704,924 pounds donated by New York Farm Bureau members, nearly 55,000 pounds more than in 2016
- 50 new retail stores added to donation program, bringing the total to 207 stores from 16 retailers
- Nearly 12 million pounds of food - an increase of over 2.6 million pounds - collected from retail stores by seven Food Bank drivers and 118 Retail Partner Agencies. Our program continues to be recognized as one of the top performing in the Feeding America network.
- 209,616 pounds of product received from food drives

agency relations & education

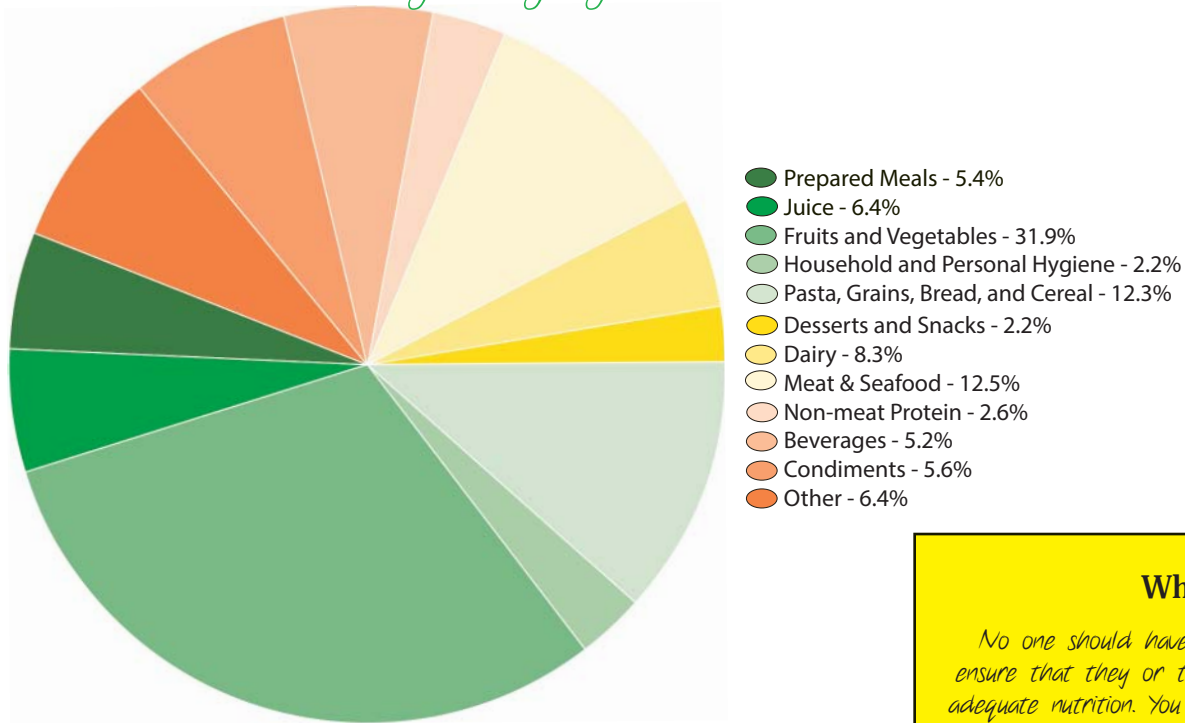
- 983 active programs, including food pantries, soup kitchens, and shelters; 36 new in 2017
- In-person visits conducted with 623 member agencies to ensure compliance with Food Bank policies and help build capacity to address clients' needs
- 51 workshops provided to member agencies on topics like Food Safety, Nutrition, Fundraising, and Customer Service

Why I Give...

I felt so good inside when I finished sorting. I helped so many people. It was awesome. That was the highlight of my day.

-Joey, Student Volunteer

product distribution by category



Why I Give...

No one should have to face a daily struggle to ensure that they or their loved ones have access to adequate nutrition. You never know who in your own community may be facing just this type of challenge.

It's been a supremely humbling and gratifying experience to support the Food Bank as a board member, and know that you can play a role in helping to see these basic needs met for those in need.

-Joel Riley, Board Member

financial donors

- 15,573 individuals, corporations, foundations, and organizations made cash gifts to the Regional Food Bank
- 10,305 cash gifts made to the Food Bank of the Hudson Valley

just say yes to fruits and vegetables

- 230 nutrition workshops and recipe demonstrations offered to over 2,000 clients at member agencies
- 31,000 pounds of produce distributed to JSY participants and member agencies

children's programs

- Backpack Program grew by 25 schools, for a total of 215 programs serving 6,300 students each week
- Summer Backpack Program provided 3-5 days of meals each week to 305 children in five counties
- Summer Food Service Program served 22,000 total breakfasts and lunches at 15 sites in 7 counties. (This institution is an equal opportunity provider.)
- School Pantry Program graduated out of its pilot phase and grew to 3 schools in 3 counties, serving 75+ students weekly throughout the school year. The program allows students to select the food they take home each weekend based on their preferences and cooking abilities.

patroon land farm

- 124,374 pounds of produce harvested
- 433 members joined the Community Supported Agriculture (CSA) Program
- 26 acres in production
- 2,384 different volunteers gave 11,204 hours of time

volunteers

11,284 different people
donated 57,538 hours of
service, the equivalent of
27 full-time employees!

fundraising events & appeals

regional food bank events & appeals

Timesunion.com/Table Hopping Mac -n- Cheese Bowl

February 18, 2017 • Siena College, Loudonville

Kicking Out Hunger

April 29, 2017 • Colonie Mohawk River Park, Cohoes

Golf Classic

June 8, 2017 • Western Turnpike Golf Course and Orchard Creek Golf Course, Guilderland

Strawberry Festival

June 17, 2017 • Altamont Fairgrounds, Altamont

Chefs & Vintners' Harvest Dinner

September 21, 2017 • The Glen Sanders Mansion, Scotia

Annual Auction Gala

November 17, 2017 • Saratoga City Center, Saratoga Springs

food bank of the hudson valley events & appeals

Markertek Open

July 29, 2017 • The Lazy Swan Golf Club, Saugerties

Walk to Fight Hunger

October 22, 2017 • Walkway over the Hudson, Highland

Farm to Fork Feast

November 9, 2017 • The Country Club at Otterkill, Campbell Hall

combined events & appeals

Yom Kippur Hunger Appeal

September 29, 2017 • participating synagogues

Check Out Hunger

October - December 2017 • Price Chopper, ShopRite, and other participating supermarkets

Hannaford Helps Fight Hunger

November - December 2017 • Hannaford Supermarkets

Holiday Hunger Appeal

November 15 - December 24, 2017 • Crossgates Mall and other locations

Gift Alternative Program

Year-Round

community events raising over \$1,000

"A Place at the Table"

ACME Turkey Bucks

Adirondack Fitness & Sports Expo

Altamont Apple & Wine Festival

American Sikhs for Humanity 5K

Angry Orchard Event

Anheuser Busch Campaign

Capital District Cruisers Car Shows

The Century House's "Enjoy One Share One"

Culinary Institute of America Student
Charity Dinners

E & J Gallo Winery Campaign

Empire Asset Management

Empty Bowls

Fleet Feet Sports' 24-Hour Fight
Against Hunger

Foodstock

Hambletonian Marathon

Hannaford "Bags to Meals"

Hudson Valley Gives

Hudson Valley Magazine's
Burger & Beer Bash

Hudson United Mortgage "Give More"
Campaign

Labatt Special Event

Legislative Correspondents Show

Macy's Bag Hunger

Mirkovic Teal Group's "Shred It"

NBC 4 New York/Telemundo 47 Feeding Our

Families at Stop & Shop Supermarkets

Neighborhood Food Drive

NY Gives Day

Panera's "Take Home the Bread"

Rocking Horse Ranch Family Fun Day

Security Plumbing & Heating Campaign

Sodexo and UAlbany Dining's Mindful Mile
and Fight Hunger 5K

ShopRite Partners in Caring

Tis the Season Concert

TJX Companies Register Campaign

Townsquare Media Hudson Valley/Jam the Van

Troy Turkey Trot

University of Vermont State Agricultural
College

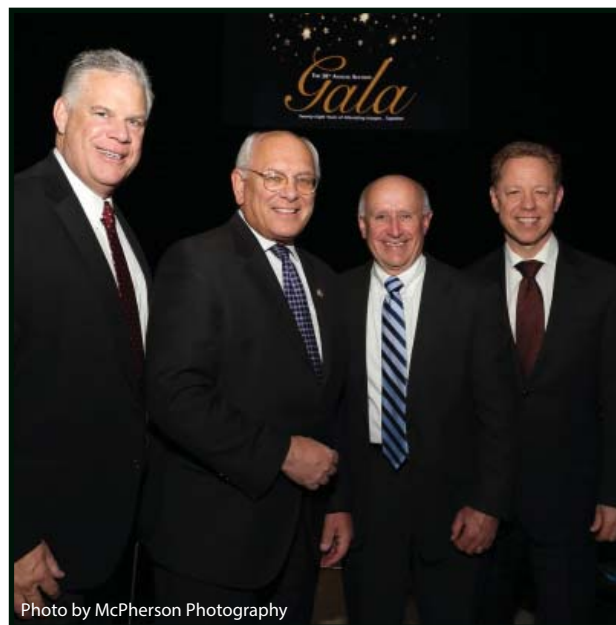


Photo by McPherson Photography

Why I Give...

The Food Bank is a charity near and dear to my heart. There are two primary reasons I donate. One is the "bang for the buck". For every dollar I give, the Food Bank is able to multiply that amount so the end result is more food for more people! I also give because I'm aware of so many people not having sufficient food/nutrition. Not only do I read about it, but I've seen it with my own eyes as a former teacher in a poor, rural school district. Having enough food to eat should be a right of everyone regardless of circumstances. I aim to be a very small part toward making this happen!

-Jan Newport, Donor



Photo by McPherson Photography

food donors & drives

food donors

Acme Markets
Acosta Sales & Marketing
Adirondack Beverages
Aiello & Sons
ALDI
All State Distributors
Annie's Homegrown, Inc.
Barber Family Farm, Inc.
Battenkill Valley Creamery
Beech-Nut Nutrition Corp
Beekman 1802
Beeline Distribution Center
BelGioioso Cheese, Inc.
BEM Sales
Best Mexican Foods, Inc.
Bilinski's Sausage Mfg. Co., Inc.
BJ's Wholesale Clubs
Black Horse Farms
Black Horse Produce, Inc.
Blue Star Farms
Brooklyn Bottling Co.
Bryant Farms
Buca Di Beppo
Bulch Creekside Farm
Bumble Bee Seafoods
Bunzl Scotia
Burger Farm
By-George Food Specialties
C&S Wholesale Grocers, Inc. - Chester
C&S Wholesale Grocers, Inc. - Newburgh
Carioto Produce
Casa Visco
Cascades Tissue Group
Catholic Charities
Charles Reinhart Farms
CLUSTER - Erie-Farrell
Coca-Cola Bottling Company of Albany
Coca-Cola Bottling Company of New Windsor
Codino's Foods, Inc.
Cold Spring Farm
Conagra Consolidated
Conagra Grocery Products, Inc.
Cookie Factory
Costco Wholesale - Nanuet
David's Tea
Distribution Unlimited, Inc.
Feeding Texas
Fino Farms
First International Health Foods
Fitzgerald Brothers Beverage, Inc.
Five Acre Farm
Fix Brothers Inc.
Florida Association of Food Banks
Food Bank for New York City
Food Bank of Central New York
Food Bank of Western New York
Fred The Butcher
Freihofer's Baking Company
Freihofer's Baking Company Outlet, Newburgh
Gaarde Foodsource
Gade Farm
Garelick Farms
General Mills, Inc.
George W. Saulpaugh & Son, Inc.
Gillette Creamery
Ginsberg's
Glenville Farm
Green Valley Onion Company, Inc.
Greenfield Ice Cream
Greenline Foods, Inc.
Greiner Brothers Farms, Inc.
Griffin Family Farm
Guptill's Arena
Hand Melon Farm
Hannaford Distribution Center
Hannaford Reclamation Center
Hannaford Supermarkets
Harvest Queen Farm
Hepworth Farms
Hidden Valley Camp
Hill & Markes, Inc.
Hoeffner Farms
Honest Weight Food Co-op
Hudson Valley Farm Hub
Hurd's Family Farm
Indian Ladder Farms
JCB Specialties



Just My Choice
Karl and Vera Zacek
Kellogg Company
Kinderhook Creek Farm
Kingston Post Office
Kiryas Joel Poultry Processing
Knight Orchards
Kraft Foods Group, Inc.
Lakeview Orchards
Larry's Food LLC
Legacy Juice Works
Mana Farms
Mars Incorporated
Marvel Produce
McDonough's Farm
McMahon's Farm, Inc.
Mead Orchards LLC
Metro-Pack, Inc.
Migliorelli Farms
Milmar Food Group, LLC
Mondelez International, Inc.
Mountain Service Distributors
National Freight, Inc. - Newburgh
Nestle Brands
New York Farm Bureau
NexBev
Nonni's Food Corporation
North East Quality Foods
NPC Processing, Inc.
NYS OGS Food Distribution & Warehousing (USDA)
Ocean State Job Lot
Ohio Association of Foodbanks
Old Chatham Sheepherding Company
Old World Provisions
Patroon Land Foundation
Pavero Cold Storage
Pawelski Farms
Pede Bros., Inc.
Penzey's Spices
Pepsi-Cola Bottling of Albany
Perry's Orchard
Pet Smart Charities
Philabundance
Plecan Farms
Plug Power
Post Consumer Brands
Price Chopper Distribution Center
Price Chopper Reclamation Center
Price Chopper/Market32
Restaurant Depot - Newburgh
Richardson Brands Company, Inc.
Ron Kingsley
Roy Burger
SAF Produce
Sam's Clubs
Saputo Dairy Foods USA, LLC
Saratoga Apple
Save-A-Lot Distribution Center
Save-A-Lot Stores

Schenectady Green Market
Seashare
Second Harvest of South Georgia
Shekomoko Farms
ShopRite Supermarkets, Inc.
Silent Brook Farm
Sky High Farm
Snyder's-Lance, Albany
Snyder's-Lance, Buchanan
Sodexo, University at Albany
Solata Foods, LLC
Stanton's Feura Farm
Stewart's Shops
Stone Ridge Farm
Stone Wall Hill - The Berry Patch
Stop & Shop New York Metro Division
Stop & Shop Supermarkets
Story Farms
Sycamore Farms
Sysco Albany
Taconic Orchards
Target DC - Amsterdam
Target DC - Wilton
Target Stores
The Cheesecake Factory
The Culinary Institute of America
The HoneyBaked Ham Company
The Soulfull Project
Thomas O. Miller & Co.
Tierra Farm
Tops Friendly Markets
Trader Joe's #535
Tree Top, Inc.
Treehouse Private Brands, Inc.
Tropicana Products
UNFI
UP Cold Connect
US Foods
USDA Wildlife Services
Vasinee Food Corp
W&W Logistics
Wakefern Food Corporation
Walmart Distribution Center #6096
Walmart Return Center #9196
Walmart Stores
Wertman Farms
West Point Commissary
Western Veg Produce
Whole Foods
Wilflow Orchards
Yonder Fruit Farms
Zafar Produce, Inc.



Why I Give...

For many of us, the question around food is "what" based. What shall we have for dinner tonight? What do you want me to pick up at the grocery store? What time do you want to eat? However, for too many the question isn't "what" but "is." Is there any food left in the house? Is there any money to go to the store? Is there a chance we can have a meal today? My wife and I support the Regional Food Bank because its mission is to help change "is" back to "what."

*-Jim and Emmy Cole,
Donors*

food drives of 1,000 pounds and above

ACME Markets/106.7 LiteFM
Albany Broadcasting Company
Ball Corporation
BlueShield of Northeastern NY
Capital District Cruisers
Catholic Charities
Charter Communications
DWM Inc.
East Greenbush Schools
Girl Scouts of Northeastern NY
Hannaford
Hearthstone Village
Joe Manke
MLK Jr Food Drive - NYS Offices
NBC 4 New York/Telemundo 47 Feeding Our Families at Stop & Shop Supermarkets
Neighborhood Food Drive
NYS OSC
Poughkeepsie Day School
Regeneron
SAS Retail Services
SSA ODAR
Townsquare Media Hudson Valley/Jam the Van
Union Square Group Ltd.
University at Albany - Student Athletes
Victoria Weyer

financial donors of \$1,000 or more

regional food bank corporate donors

3M Foundation
 Accent Commercial Furniture
 Adirondack Beverages
 Adirondack Community Action Programs
 Adirondack Community Outreach Center
 Adirondack Foundation
 Advance Auto Parts
 Advantage Sales and Marketing
 AdvoCare International
 Aflac New York
 Ajinomoto Windsor
 Albany ENT & Allergy Services
 Albany RV
 Allen Flavors
 Amenia Lions Club
 American Endowment Foundation
 American Legion Mohawk Post 1450
 American Legion Post 490
 American Sikhs for Humanity
 Amsterdam Printing & Litho
 Ancient Temple Lodge No. 14, F.& A.M.
 Ancramdale Neighbors Helping Neighbors Association
 The Anderson Group
 Anheuser-Busch
 Apple & Wine Festival
 Applied Materials
 Aquatic Development Group
 Archer Daniels Midland (ADM)
 Ardent Mills
 Argyle Central School District
 Ascienzo Family Foundation
 Aurora, Inc.
 Austin & Co
 AutoZone
 Averill Park Teachers Association
 Ballston Spa National Bank
 Bank of America
 Bank of Greene County Foundation
 Barilla America
 Barton & Loguidice
 Bechtel National, Inc.
 Beckmann Converting
 Beech-Nut
 Berkshire Bank Foundation
 Berkshire Taconic Community Foundation
 Bethlehem Festival Fund
 Bilinski Sausage Company
 Bimbo Bakeries
 BJ's Charitable Foundation
 Blackhawk Network
 BlueShield of Northeastern New York
 BNY Mellon
 Bob's Discount Furniture
 BOCES Capital District
 BOCES Rockland
 Bonadio & Co.
 Bond, Schoeneck, & King, LLP
 Bouchey Financial Group
 Bradshaw International
 Brigar X-Press Solutions
 Brittonkill PTSA
 Broadalbin-Perth Lions Club
 Broccoli Associates
 Brooks Family Foundation
 Brunswick Presbyterian Church
 Burnt Hills-Ballston Lake Rotary Club
 Burnt Hills-Ballston Lake School District
 C&S Companies
 C&S Wholesale Grocers
 C.T. Male Associates
 Caldwell Presbyterian Church
 CapBen Consulting
 Capital District Insurance Community
 Capital District Physicians' Health Plan
 Capstone Logistics
 Cargill
 Carl E. Touhey Foundation
 CarMax
 Casa Visco Finer Foods
 Cascades Containerboard Packaging
 Catholic Charities of Columbia and Greene Counties
 Centor
 Century House
 Charles R. Wood Foundation
 Chatham Area Silent Pantry
 Chicago Title Insurance
 Children's Foundation of Columbia County
 Chobani
 Church Women of Claverack
 Citizens Bank
 Citrus World
 Cliff Bar & Company
 Clifton Park Elks Lodge #2466
 Climate Engineering Truck & Trailer Refrigeration
 The Clorox Company
 Cloudsplitter Foundation
 CNY Community Foundation
 Cobleskill Stone Products
 Codino's Foods
 Colonie Senior Service Center
 Comfort Food Community
 Community Food Pantry

The Community Foundation for the Greater
 Capital Region
 -Hershey Family Fund
 -Lee & Heidi Newberg Fund
 Community Foundation of Unadilla
 ConAgra Brands Foundation
 Concerned for the Hungry
 Congregation Gates of Heaven
 Continuum Wealth Advisors
 Contractors Sales Company
 Cooperative Christian Ministries of Schodack
 Corinth Central School District
 County Waste
 Crown
 Crown Point Central School
 CSI Sales & Technical Services
 Daisy Brand
 Davies Office Refurbishing
 DavisVision
 Daybreak Fast Freight
 The Deanna Marie Rivers Foundation
 DeLassantos Landscaping
 DeNooyer Chevrolet
 The Dewar Foundation for Greater Plains School
 Digital X-Press
 Dino's Sausage & Meat Company
 Domino Foods
 DST Systems
 E & J Gallo Winery
 Eastern Fish Co.
 Eastern Heating & Cooling
 Eastern Managed Print Network
 The Edmeston Education Foundation
 Empire Asset Management Group
 Enterprise Rent-A-Car Foundation
 Erie Insurance
 Esbenshade Farms
 Essendant Charitable Foundation
 Exit 9 Wine & Liquor Warehouse
 Fairways of Halfmoon
 Fancy Foods
 Farm Credit East, ACA
 Farm Fresh
 Feeding America
 -Anthem Inc.
 -Bank of America
 -Costco
 -Darden
 -French's Food Co.
 -General Mills
 -JP Morgan Chase
 -Kellogg's
 -Kraft Heinz Co.
 -Pepsi-Cola Co
 -Red Nose Day Fund
 -Subway
 -TGI Friday's
 -The Pampered Chef
 -Unilever
 -Walmart
 -Yard House
 Fenimore Asset Management
 Ferolie Corporation
 Fidelis Care New York
 Fidelity Charitable Gift Fund
 First Presbyterian Church
 First Presbyterian Church of Valatie
 First Reformed Church of Scotia
 First United Methodist Church of Delmar
 Fleet Feet Sports
 Food Bank Association of NY State
 Food Pantries for the Capital District
 Ford Motor Company
 Forno
 Fort Edward Union Free School District
 Foundation of CVPH Medical Center
 Frances L Carpenter Foundation
 Franklin Central School
 Freight Distribution
 Fulmont College Association
 The Galasso Foundation
 Garden Homes Fund
 Garelick Farms
 GE Foundation
 GE Global Research
 Genuine Parts Company
 Ghent Food Pantry
 Gideon Lodge #140 - B'Nai B'Rith Housing
 Foundation
 Gilbertsville-Mt.Upton Central School District
 Global Foundries Stillwater Foundation
 Gloversville Enlarged School District
 Golde Engineering
 Goldman, Sachs & Co.
 Golub Corporation
 Golub Family Foundation
 Good Neighbor FP of Woodstock
 Graphic Packaging International
 Greater Johnstown School District
 Green Island Union Free School District
 Greenville Area Interfaith Council
 Guilderland High School
 Guilderland Letterman Foundation
 Gupta's/Capital District Cruisers Car Shows
 Hadley-Luzerne Central School
 Hallmark Cards
 The Hanna Charitable Fund (Hanna Family Fund)

Hannaford Charitable Foundation
 Hannaford Supermarkets
 Hannay Reels
 Harrisena Community Church
 Hartford Central School
 The Hatherleigh Foundation-Hobart Food Pantry
 Health Research Inc.
 The Helpers Fund
 Henry L. Kimelman Family Foundation
 Herkimer County Hunger Coalition
 Homestead Funding Corp.
 Hudson City School District
 Hudson Gateway Realtors Foundation
 Hudson River Bank & Trust Co. Foundation
 Hudson River Frontier Missionary Baptist Assoc.
 Huhtamaki
 IBEW Local Union 236
 Immanuel Evangelical Lutheran Church
 Imperial Distributors
 Innovo Kitchen
 Jaeger & Flynn Assoc.
 JCB Specialties
 JCEO of Clinton & Franklin Counties
 Jewish Federation of NENY
 Johanna Foods
 Johnstown Lions Club
 Johnstown Teachers Association
 Junior League of Albany
 Jupiter Environmental Services
 Kaatirondack Benefit Planning
 Keeler Motor Car Company
 Kent Smith Midas Group
 Kenworth Northeast Group
 KeyBank Foundation
 Kiwanis Club of Sand Lake
 Knit Club of the Hudson Valley
 KPMG
 Kreider Farms Egg Division
 LaBatt USA Operating Co.
 Ladies of Charity Albany Diocese
 Lansingburgh Central School District
 Latham Periodontics
 Latham Ridge School
 Law Firm of Alex Dell
 Lawrence I. and Blanche H. Rhodes Memorial Fund
 Legislative Correspondents Association
 Lemery Greisler
 Leonard Bus Sales
 Lew A. Cummings Co.
 Liftech
 The Light Rain Foundation
 Lily Transportation Corp
 Living Hope Church
 Local 294 Teamsters Care
 Lounsberry Family Foundation
 M & T Charitable Foundation
 M. Fellingier Co.
 Macy's Foundation
 Malone & Tate Builders
 Malta Business & Professional Assoc.
 Mama Rosie's
 Maple Hill Golf Tournament
 Marlboro Central School District
 MARS WRIGLEY Confectionery US
 Massry Charitable Foundation
 Mayfield Central Presbyterian Church
 McDonald's
 McNamee, Lochner, Titus & Williams
 Mechanicville Elks 1403
 Merck Partnership for Giving
 Midas Auto Service Experts
 Milford United Methodist Church Food Pantry
 Mirkovic Teal Group
 Mohawk Resources
 Mohawk Valley Medical Associates
 Momentive Performance Materials
 Morgan Stanley
 Moriah Central School
 Mrs. T's Pierogies / Ateeco
 National Beef Packing Co
 National Council of Jewish Women, Rockland Section
 National Resources Conservation Services
 Nature's Bounty Company
 NBT Bank
 Neena Rao Charitable Corp
 Nestle
 New Country Toyota of Clifton Park
 New World Foundation
 Newman's Own Foundation
 Nolan & Heller
 North Country Ministry
 Northeast Information Systems
 Northern Rivers Family Services
 NPC Processing
 NY Business Development Corporation
 NY Capital Chapter Association of Government
 Accountants
 NYBDC Foundation
 The Old Brick Furniture Company
 Orange County NY
 Otego Elementary School PTO
 Our Family Foundation
 Our Lady of Victory Church
 Palatine Literary Society
 Panoply Foods Corp
 PayPal
 PEF Region 8

Pepsi-Cola Albany
 Peru Central School
 Picotte Companies
 The Pictsweet Company
 Pitney Bowes Foundation
 Plastipak Packaging
 Pride of Ticonderoga
 Prince of Peace Lutheran Church
 PSC, LLC
 Quickie Manufacturing Corp
 Radiant Pools
 Red Argyle
 Red Hook Faculty Assoc.
 Red Hook Rotary Club
 Red Pine Ridge
 Reformed Church of Canajoharie
 Reformed Presbyterian Church of Duanesburg
 Regeneron Pharmaceuticals
 Rehrg Pacific Company
 Rensselaer Middle School Alumni Association
 Review Foundation
 Richfield Springs Rotary Club
 Rose & Kiernan Charitable Foundation
 Rosenblum Development Corp
 Rotary Club of Ballston Spa
 Rotary Club of Glenville New York
 Rotary Club of Hyde Park
 Rotterdam Eagles No. 3610
 S. D. Carruthers Sons
 S. Schodack Vol Fire Co. Ladies Auxiliary
 Sababa Beverages
 The Sandy Hill Foundation
 Saranac Lake Central School District
 Saranac Lake Teachers' Assoc
 Saratoga Eagle Sales & Service
 The Saratoga Hospital
 Saratoga National Bank and Trust
 Sargento Foods
 The Schenectady Foundation
 Schenevus Backpack Program
 Schodack Central School
 School Systems Federal Credit Union
 Schwab Charitable Fund
 SEFCU
 The Seymour Fox Memorial Foundation
 Shenendehowa Central School
 ShopRite Partners in Caring Fund of the
 Community Foundation of New Jersey
 Shoprite Supermarkets
 Siggis
 Skinner & Damulis
 SKS Bottle & Packaging
 Slattery Marketing
 Smuckers
 Snyder's Restaurant
 Sodexo @ UAlbany
 Sodexo Foundation
 Specialty Silicone Products
 Sprague Operating Resources
 St. John's Episcopal Church
 St. Joseph's Roman Catholic Church
 St. Luke's Lutheran Church of Sidney
 St. Luke's Lutheran Church of Valatie
 St. Michael's Church
 St. Peter's Health Partners
 Staples
 Staritch Foundation
 State Capital District BPO Elks
 Stewart's Shops
 Sunmark FCU
 Taconic Foundation
 Target Flavors
 TD Charitable Foundation
 Techlong
 The Woodforest Charitable Foundation
 TJX Foundation
 Tops Markets
 Tower Products Incorporated
 Troy Turkey Trot
 Trustco Bank
 Turner Construction Company
 Unadilla Rotary Club
 UNIMAC Packaging
 United Way - CFC Campaign
 United Way of Dutchess/Orange
 United Way of the Greater Capital Region
 United Way/SEFA Campaign
 University of Vermont & State AG College
 Vermont Mutual Insurance Group
 Voorheesville Central School PTA
 VP Supply Corp.
 Wakefern Food Corp
 Wallace Research Foundation
 Walmart
 Walmart Foundation
 WGY Christmas Wish Campaign
 Wheatfields Bistro & Wine Bar
 The Wine Group
 Whitehall Central School
 William Gundry Broughton Charitable Private
 Foundation
 Willow Springs Foundation
 Women of St. Paul's
 Worcester Back Pack Program



regional food bank individual donors

Gerard Abdelnour
David A. Aikens
Neil and Phyllis Akins
Matthew J. Alinger and Meika E. Loe
Linda and John Almstead
Dorothea Alonge
Phillip and Denise Andrews
Susan and Michael Andrews
William D. Andrews
David Ashton III and Kathleen M. Moser
Douglass and Janet Bailey
Peter M. Bakal
Jay Baldwin
Bruce and Carolyn Barker
Theresa M. Barton and Mark Morris
Joseph and Evalyn Basloe
Dr. Charles A. Becker and Mrs. Mary Becker
Robert Benak
Raymond and June Benenson
Charles Benson
Georgette and James Berlin
Mary Bettens
Gerard R. Bilodeau
William and Wylla Mae Bitner
Gary and Charleen Bivona
Charles and Anne Bohl
Paul C. Bono and Pauline Sue Liebig
John C. Brownrigg
Cathy Bruschi
Susan and Dana Bryant
Jacquelyn Bucelot-Mills
Alfred E. Bugenhagen, Jr.
Nathan and Christine Bunkoff
Grace Campbell
Dennis and Sharon Canary
David Caplan
Gene and Karen Cardamone
Kevin J. Casutto
Norbert and Jean Chenette
Rae A. Clark
Kevin Cleary
John and Mary Jo Cline
Jessica and Johnathan Cohn
James and Margaret Cole
Henry C. Collins
Gabrielle Conklin
Raymond and Deborah Conrad
Alice R. Corbin
Thomas and Martha Corneil
Jeffrey and Jennifer Cox
Carmelo and Helen Crisafulli
Donald and Joan Csaposs
Joseph and Kathy Culella
Jeff Dagen
Ellen and Joseph D'Aniello
Dominick and Carolyn Darkangelo
Susan Darrin
Thomas F. Della Rocco
Thomas J. Demers
Edward and Barbara Dempsey
The Louis A. Sr. and June M. DeSorbo Charitable Fund
Kevin and Deborah Dixon
Brian and Toni Doherty
Daniel A. Dolan
Bob and Marie Dolfi
Patricia A. Dooley
James and Barbara Dowdle
Susan J. Du Bois
Assemblywoman Janet Duprey
Nancy P. Durr
Mary Jane Ellis
Carl S. Erickson
Sheldon Evans and Martha McMaster
Terence Farrell
Evan and Renee Feinman
Jane A. Feisthamel and Mary Margaret Snyder
Matie L. Flowers and Joseph R. Visalli
Patricia Ford
Ilene Friedman
Frances C. Fromm
Leah S. Gaies
Kathleen and Marshall Garrow
Raymond and Joanne Germain
Lewis and Barbara Gershman
N. Richard and Monique Gershon
Laraine Gillette
Carol A. Giroux
John M. Gould
James and Lynn Grant
Barbara H. Green
Erwin F. Guetig and Helen K. Rack
Carl and Catherine Hafner
Barbara S. Hancock
Dr. David Hannay
Walter and Jean Hayes
Steven Heneghan
Joseph and Lorraine Herkenham
Emery and Nancy Herman
Frank Hickey
William and Beth Hillig
Kristen and Joseph Hodlin
William and Cheryl Hogan
Glenn and Irene Holzhauser
Samuel P.B. House and Heather D. Diddel
John and Beatrice Howland
Eric and Suzanne Hudson
John E. Hull
James and Ruby Hutchison
Anthony R. Ianniello
Amie Jamieson

Marielena Kamienski
Patrick and Susie Kelly
Richard J. Killough
Edward R. Kozacek and Rosemary Tucci-Kozacek
Gary and Nichole Krisanda
Ronald and Catherine Lane
Peter and Dawn Lannon
Christine E. Lassiter
Todd and Lory Lawrence
Gloria Lekki-Macri
Beth Levesque
Michael J. Lofrumento
Doug and Susan Lohnas
Cristine and Douglas Lonnstrom
Jan and Steven Lootens
Michael and Kay MacLaury
Michael and Gail Malone
Bernard A. Margolis and Amanda Batey
Ralph and Jacqueline Marino
George E. Martin
Tracey Martin
Paul T. May
Janice B. McCabe
Maryann M. McGeorge and Susan G. Sanderson
Charity McManaman
Ann and James McPherson
Ilse Melamid
John and Jessica Meyer
Timothy and Anne Marie Miller
Richard and Judith Mills
Frank and Theresa Minissale
Richard S. Moffitt
Lewis and Phyllis Morrison
Robert and Lisa Moser
Donald and Magdalena Mowbray
Mary Murin
Eleanor H. Nasner and Margaret F. Holbritter
Peter Newell
John and Elizabeth Nickles
James and Anne Noonan
David J. Oakley and Dianna Mastro
B. Emer O'Keefe and William T. Clayton, II
Chet and Karen Opalka
Scott Oppenheimer
Brian Payne
Ronald and Margaret Pedersen
Johanna Petersen
Joseph and Patricia Phelan
Thomas and Anne Phillips
J. Gilbert Plantinga
John P. Podgorski
Debra A. Pollard
Francis and Tamsen Poore
Don and Lois Porter
Edward and Angela Potrikus
Robert Pozniak
Stephanie L. Primero
Mark and Christine Quandt
Elaine C. Quinn
Madeline L. Raciti
Frank M. Ramsey, Jr.
Stephen F. Ramseyer, Ph.D.
Mr. and Mrs. Thaddeus Raushi
John and Cynthia Reinker
Elizabeth J. Renaud
John and Sandra Reschovsky
Jim Ridenour
Pamela and Donald Robbins
Sarah Robinson
Meisha L. Rosenberg
Joan K. Rueckert
Christopher and Diana Rulon
Daniel and Christina Ryan
James R. Sander
James and Susanne Santamarina
Joanne Scheibly
Peter and Sherry Schermerhorn
Lawrence Schillinger and Shari Golub Schillinger
Lawrence and Jennifer Schmidt
Judith S. Schreiber
Carol A. Schultz
Rick and Tymmm Schumaker
Barry and Beverly Schwartzbach
A. Joseph Scott, III and Colleen M. O'Connell
Walter R. Scott
Charles Sealing
Judith and Leonard Singer
Joseph R. Slomka
Taylor Spencer
Scott and Krista St. George
Ellis and Mary Staley
Norman R. Stewart, Jr. and Carolyn A. MacDonald
Vincent Striano
Cynthia and Michael Suprenant
James and Janet Sweeney
Bruce Tanski
Laura E. Tenney and Gerry Boone
Frank and Liz Therrien
Kathlene Thiel and J. Eric King
Timothy Thompson
David G. Tieman
Thomas and Pamela Timbie
Kathleen Tomich
Virginia E. Touhey
Rodney J. Trent
Kathleen A. Turek
Cale and Courtenay VanBuren
William and Megan Vining
Amy C. Volmer
Samuel and Carol Wait
Josef Watts
Carolyn K. Wheeler

Douglas and Kathleen Wood
Mark and Suzanne Woodward
Karl and Vera Zacek
David Zanotta
Stephanie Zarpas and James Albro
Clifford P. Zettle
Margaret R. Zettle

food bank of the hudson valley corporate donors

A & B Agency, Inc.
Adams Fairacre Farms, Inc.
Amy Benjamin Educational Service
Ancient Order of Hibernians Hooley on the Hudson
The Ball Foundation
Barton Birks Chevrolet
Bernard & Anne Spitzer Charitable Trust
Brosc-Bisaro Charitable Fund
Cafe Spice, Inc.
Caplan-Bensley Foundation
Carmelite Communion, Inc.
Castleton Commodities International
Central Hudson Gas & Electric Corp.
Chevron Humankind Matching Gift Program
Collection Bureau Hudson Valley Inc.
Community Foundation of NJ ShopRite
Community Foundations of the Hudson Valley
Construction Contractors Association of the Hudson Valley
Cornwall Yacht Club Ladies Auxiliary
Country Kids 4H Food Pantry, Inc.
Cricket Valley Asset Management Services, LLC.
The Culinary Institute of America
Daniel J. & Edith A. Ehrlich Family Foundation Trust
Ditron, Inc.
Eaton Sales & Marketing
EMS Plumbing, Heating & Air Conditioning, Inc.
Estate of Elizabeth H. Boedecker
Evelyn & John Morrison Charitable Foundation
Fabricators & Erectors, Assoc.
Fair-Rite Products Corp.
First Presbyterian Church of Highland
Gerald A. Doering Foundation, Inc.
Grimaldi Portfolio Solutions, Inc.
Hambletonian Marathon Inc.
Hannaford Brothers Co.
Holy Cross Monastery
Home Depot Foundation
The Hudson Gateway Realtor Foundation, Inc.
Hudson United Mortgage LLC.
IBM Employee Services Center
Inn at Buttermilk Falls, Inc.
Irving and Gloria Schlossberg Family Fund
KeyBank Foundation
KLA-Tencor Foundation
Lakeland Bank
Loewi-Lemberger Kaplan Charitable Fund
The Lorraine M. Gilbert Living Trust
M & T Charitable Foundation
Manhattan Beer Distributors
Markertek/Tower Products Inc.
Mey Share Foundation Inc.
Mid Hudson Valley Corvette Association Inc.
Middle Atlantic Products
Mid-Hudson Valley Federal Credit Union
Miller/Howard Investments
Milton Holdings LC.
Monroe-Woodbury CSD High School ECA
Morgan Linen Service Inc.
Moritz Foundation
Moulton Memorial Baptist Church
New Albertsons Inc.
New Hackensack Reformed Church
New York Football Giants, Inc.
Newburgh Free Academy
The Newcombe Foundation
Orange County New York
Package Pavement
PCSB Community Foundation
Pepsi Cola of the Hudson Valley
The Perlmutter Family Trust
Plant Wings Enterprises, Inc.
Polich Tallix Inc.
Portfolio Solutions, LLC
Price Chopper
ProTapes & Specialties, Inc.
Quick Chek
Quigley-Sullivan Funeral Home, Inc.
Radio Woodstock Cares Foundation
Rhinebeck Central School District
Rocking Horse Ranch
The Ronald & Joan David Foundation, Inc.
Royal Pools & Spas, Inc.
Sawyer Savings Bank
Sheet Metal Contractors Industry Fund
Sherwood Power Equipment, Inc.
Sisters of Reparation Charitable Trust
St. Luke's Episcopal Church
St. Peters Roman Catholic Church
St. Stephen the Martyr Religious Education
Stop & Shop Supermarket Company
Strategic Pension Services, LLC.
Susan and Gerald Bereika Family Foundation
Switchcraft, Inc.
Sysco Albany, LLC.
Take Home The Bread, LLC
TD Bank
Techflex, Inc.
TEG Federal Credit Union
Temple Beth-El

Thendara Foundation
Thoben Hill Properties
Turning Point Entertainment of the Hudson Valley
United Parcel Service
United Way of the Dutchess-Orange Region
Wakefern Food Corp./ShopRite Supermarkets
Walden Savings Bank
Washingtonville Central School District
William and Elaine Kaplan Family Private Foundation
Yoga on the Wallkill

food bank of the hudson valley individual donors

Timothy and Jeanne Alessi
JoAnn Atlas
Christopher and Rebecca Barth
Leonard S. Bartley, Jr.
Janet Bellusci
Glen and Julie Biggs
John and Donna Bream
John J. Burlingame
Christopher and Jill Capone
Antonio J. Carlesi
Joyce Castro
Milan and Chitra Chauhan
Angela Chiarello
Barbara Citarella
Joseph and Diane Colangelo
Robert and Patricia Corigliano
James Creagan
Barbara Danish and Laura Brown
Jeffrey and Jill Degen
Timothy and Susan Delaney
Kathleen DeMers
Anita Dreicher and Laurie Gross
William T. Dudman
James and Ida Economos
Paul R. Edlund
Mark Edmonds
Cristina Enriquez-Bocobo
Janice Foerschler
Michael Foglia
Kelly Williams and Andrew Forsythe
William and Joan Frey
Richard and Josephine Gamble
Sandra Gerry
Vincent R. Giannone
Theodore J. Goetz
Janlori Goldman
Margaret Goldman
Sean S. Hegarty
Jay and Carole Ann Heimowitz
Glenn and Jennie Henricksen
Star D. Hesse
Richard and Anne Hoff
Gary and Agnus Holt
Elizabeth Jordan and Thomas Polk
Daneen Kallstrom
Kevin C. Kenney
George W. Ketchum
Cole and Mary Kingseed
Charles T. Kocsis
Thomas J. Kostenko
Donald R. Lachowicz
Daniel Law
Timothy J. Lenz
Martha Leonard
Robert and Jennifer Lerch
Judith Lessinger
Mark and Kristine Lukasik
G. Michael and Jill MacElhiney
Michael and Teresa Mallon
John and Barbara McDonald
Margaret McNamara
Richard J. Merck
Kiah Miller
David & Patricia Morse
Travis and Kristen Moses-Westphal
Viera P. Muzithras
John and Adriana Nevers
Rachael Parker
Gary and Eugenia Pavek
Steven Piriano and Omayra Mercado
Geoffrey and Deanna Platt
Gerard and Ellen Pompilio
John Respasp
Robert and Linda Rizzotto
John Ros
Steven Rosenberg and Deborah Duke
Helaine Rudolph
Stephen M. Santoro
Steven and Karen Schlachter
Kathryn Schulz
Clarence & Margaret Scott
Nicholas and Barbara Solforo
Benjamin Stahl
Catherine Tegtmeyer
Peter J. Turrone
Carole Umberger Parker
James and Hope Veltre
Simmer Verma
Anne Vollmer
Gregory and Janice Vurckio
Robert E. Wagner
Richard Weininger and Gretchen Stearns
Laurence Willig
Paul and Ming-Wen Wissmann
Thomas and Valerie Wolzien

time and talent donors

Volunteers play a vital role in the Food Bank's work and allow us to accomplish more than we ever could on our own. We appreciate the gifts each person brings and recognize those individuals and groups that come back time and time again. We are stronger for their many contributions.

regional food bank individuals who contributed a significant number of hours

Jan Abrams
Seth Abrams
Lee Adlowitz
Carey Alberg
Cliff Allen
Dorcey Applys
Cherie Argotsinger
Will Asher
Jill August
Paul Axelute
Laurie Baird
Edward Barnad
Chuck Bartoletti
Shreya Bavdekar
Jim Becker
Doris Bindl
Emily Blissett
Connor Bolger
Deb Bolger
Paul Bono
Barry Bresler
Joanne Bresler
Judy Bridges
Dave Briggs
Peg Briggs
Ryan Brocci
Jill Brown
Peter Brown
Erin Burke
Harini Byraju
Linda Cacciola
Ann Cantore
Zach Carson
Charlotte Carter
Jim Catlin
Mihir Chakravarthi
Natalie Chang
Rubin Chen
The Christiansens
Don Clear
Rebecca Cohen
Cole Family
David Connelly
Cherie Conway
Michael Costelloe
Ricky Cui
Mat Cunningham
Patience Curtis
Lee Danielson
Ronnie D'Alauro
Chris David
John Dempsey
Morgan Dempsey
Daylin Derosier
Heather Diddel
Ella DiPietro

Kristin Dobies
Donnaruma Family
Carol Dorn
Francis Duffy
Jack Dunn
Nancy Dunphy
Ray Durivage
Kathleen Durkee
Jack Egan
Gary Elliott
Andrew Emmy
Cindy Estes
John Evers
Gilda Fake
Caroline Falcone
Marion Farrell
Laura Fiato
Joe Fierro
Janet Fisher
Paul Fisk
Marissa Forte
Steve Fountain
Fournier Family
Dolores Frank
Sharon Fricke
Frank Futia
Nick Gallucci
Garrant Family
Eiman Gasim
Judy Gates
Missy Geis
Emily Getty
Gibbons Family
Phil Giltner
Nick Giordano
Gustavo Gonzalez
Thomse Green
Scott Gregory
Suzanne Gunther
Gupta Family
Alaina Hargrave
Tom Hart
Dave Hayes
Susan Hayes
Franklin Hecht
Shannon Hickman
Reba Hocking
Barb Hrachian
Kevin Huba
Nancy Huba
Chris Hughes
Chris Imperial
Mary Ann Jacobson
Emily Jahn
Ollica Junco
Pranav Kalapala

Katie Kanter
Andy Kaufman
Jean Keating
Tim Kensky
King Family
David Klien
Samantha Koduri
Elizabeth Konecnik
Koal Kornfield
Mahila Krishnamurthy
Donnamarie LaBelle
Berdette LaManna
Linda Lashment
Laz Family
Laura Lehtonen
Mary Ann Lettau
Mike Lofrumento
Nils Lundberg
Matt Magill
Colin Manley
Connie Mattice
Jack Mayer
Maryann McGeorge
Kari Midthun
Pat Milano
Reilly Miller
Jeff Miller
John Milligan
Mitola Family
Margie Morelli
Munna Mustafizur
Ruchika Naidu
Melvin Neam
Neild Family
Perry Nicolai
Mary Anne Nicholas
Molly Nicol
Brendan O'Connor
Lorraine Okeson
Carolyn Oleyornek
Kelly O'Toole
Tanya Pai
Tom Palmer
Shashank Patil
Viraj Patil
Manne Patta
Ella Pirri
Lauren Piska
Debra Pollard
Popp-Lyons Family
Terri Powers
Ron Priest
Christopher Putnam
Gordan Putnam
Donna Quenneville
Don Rabin

Why I Give...

Volunteering in the warehouse at the Regional Food Bank really gave me a great perspective on the impact one individual can have in fighting hunger. The Volunteer Coordinators did an amazing job of making the connection between the work we were doing that evening and how it would benefit our community. It made me want to get involved as much as I could. From volunteering your time, donating food, giving money, organizing collection drives, or just spreading the word, there are a tremendous number of ways one person can make a difference in combating food insecurity in their local community.

-Brian Wolters, Board Member

Dick Raeder
Amber Ricuitti
Rieffel Family
Joel Riley
Celia Rivet
Ellen Rizzo
Sarah Robinson
Al Roeser
Pat Rogers
Mike Rosen
Kyle Rueckert
Rueckert Family
Mary Beth Sankowski
Jim Santamarina
Karolina Schabses
Larry Schillinger
Steven Schreiber
Dan Schryver
Bill Schwartz
Sebben Family
Marty Shields
Jayanth Shivamurthy
Mike Sikule
Nicole Silvestro
Kathy Slosberg
Deb Smead
Arielle Smith
Raymond Smith
Esther Sosman
Spoonster Family
Barb Stampfli
Greg Sterling
Nancy Stern
May Stewart

Ann Sullivan
Frank Tambasco
Michelle Taylor
Karen Tedesco
Ted Thompson
Jeremy Thrane
Cathy Torbitt
Kristin Tully
Lakshmi Tumati
Sr. Betsy Van Deusen
Mendy and Mason Varga
Annette Vermilyea
Leona Verstandig
John Vogel
Ella Wade
Sophia Wade
Earl Waldron
Andy Walton
Nida Wassem
Bob Watson
Lucas Weis
Adrian Whitford
Lisa Whitney-Buck
Brian Wolters
Alexa Wyszomirski
Yanoff Family
Nadine Yarter
Theresa Zarrelli
Mike Zavisky
Rick Zimmer
Margaret Zollo



Photo by Vincent Giordano Photography

food bank of the hudson valley individuals who contributed a significant number of hours

Roxi Aguilar
Elise Beal
Ryan Bedross
Leslie Blue
Jasmine Bowley
Jack Calzaretta
Victoria Carnright
Sofia Castillo
Nick Citera
Nick Coto
Ron Cozart
Carol & Bob DeMaio
Daisy Dervish
Hadonel Desgravers
Julie DeStefano
Elisa DiBrizzi
Emily Dolan
Pamela Donato
Brittany Drye

Kerry Engle
Michael Foglia
Michael Fox
Julia Godshall
Antonio & Alexandra Gomez
Zuleika Graham
CJ Hartwell
William Hennessey
Amy Hepworth
Richard Herman
Mark Hurey
Laura Jimenez
Mary Juliano
Dagan Lacorte
Ellen LaRochelle
Jill MacElhiney
Barbara Malley
Dylan Mannion
Justin Martinez

Amy McCarthy
John Melkon
Kim & Keith Meyer
Mary Missere
Noelle Molloy
Greg Moretto
Laura O'Connor
Kyle Orlando
Howard Protter
John F. Rath, III
Hannah Reinle
Pedro Rodriguez
Karen Ruberg
John Scharfenberg
Al Schmidt
Steven Shala
Roberta Sherman
Larry Singleton
Anthony & Maria Spagna

Scott Stone
Kasie Tague
Elora Taphorn
Paul Taxter
Denise Teifer
Barbara Thompson Fix
Steve Turk
William F. Vacca
Juliette Vallet
The Van Roekens Family
John Vigliotti
Antonio J. Vinciguerra
Anne & Liam Vinett
John Walsh
Gannon Yarmus
Scott Yermine
Skyler Young
Bryan Zingerman

regional food bank groups of merit

3M
AIM Services
Albany Academy
Albany Ancient Order of Hibernians
Algonquin Middle School
ARC
Auto Mate
Ballston Spa UMC
Bank of America
Bethany Reformed Church
BlueShield of NENY
BOCES
Boy Scouts
Brown University Alumni
Camp Givah
Canajoharie Campers
Capital District Hope Chapter
Capital District Volunteers
Center for Disability Services
Christ the King Church
Christian Brothers Academy
Colonie Central School District
Commerce Hub
Congregation Gates of Heaven
Craig Elementary School
Crane Lake Campers
Doane Stuart School
Dunkin' Donuts
Eastern Parkway UMC
Emma Willard School

Farnsworth Middle School
GE
Girl Scouts
Global Foundries
Goldman Sachs
Guilford Schools
Hannaford Supermarkets
Hudson Valley Community College
Journey & SUNYA
KeyBank
Liberty Mutual
Living Resources
Loudonville PTA
LRI
Lyons International
Mekeel Academy
MENSA
Morgan Stanley
New Journey Program
Niskayuna Student Work Program
Northeast Career Planning
Northeast Parent and Child Society
Northeastern Regional Council of Carpenters
Office of the State Comptroller
Ohav Shalom
Our Lady of Grace
Regeneron
Rensselaer County ARC
Rensselaer Polytechnic Institute

River Run Montessori
Sand Creek School
Schenectady JCC
SEFCU
Shaker High School
Siena College
SKS Bottle & Packaging
Southern Saratoga Chamber of Commerce
St. Anne's Institute
St. Clare's Faith Formation
St. Coleman's
St. George's Lodge of Masons
St. Kateri Parish
St. Rose Parish Newtown, CT
St. Timothy's
Sunmark Federal Credit Union
Troy Kiwanis Club
U Albany Residential Life
UMC Church Group
Union College
University at Albany
Walmart
Wildwood Programs
Woodland Hills Montessori
Youth Court

food bank of the hudson valley groups of merit

ARC of Rockland
Ball Corp
Center for Independent Living
Chester Kiwanis
Crystal Run Village
Keon Center
LDS Missionaries
Mount Saint Mary College
Newburgh ETA
Orange Regional Staff
QuickChek
Storm King School
SUNY New Paltz
United Way of the Dutchess/Orange Region
US Military Academy

in-kind donors of \$1,000 or more

3M
99.5 The River
Adirondack Beverages
American Concert and Entertainment Services, Inc.
Amscan
Chef Jose Arteche, Shogun
Bank of America Merrill Lynch
Steve Barnes - Table Hopping Blog
BJ's Wholesale Club - Albany
C&S Wholesale Grocers, Inc.
Cabot Cheese
Cafe Spice
Capital Region Living Magazine
Cascades Containerboard Packaging
The Century House
Cobleskill Stone Products
Constellation Brands
Cosimo's Restaurant Group
Country Club at Otterkill
Craig Thomas Pest Control
the Creative Advantage inc.
Crossgates Mall
Culinary Institute of America
DanoneWave
Davies Office
Delicato Family Vineyards
Elite Island Resorts
The Emerson Resort & Spa
Empire Broadcasting/101.3 WJKE The Jockey
Events Unlimited
Fancy Foods
Fresh
Ginsberg's Foods
The Glen Sanders Mansion
Hannaford Supermarkets
Henry's at the Farm
Hudson River Fruit Distributors
Hudson Valley Magazine
Informz
JCB Specialties
Chef Linda Kindlon, Bake for You
KISS-FM 96.1
Konica Minolta
Kreher Enterprises
Ron Ladouceur
Chef John LaPosta, Innovo Kitchen
LB Brokers
Luminary Media
Chef Rachel Mabb, The Ruck

Magic 590AM/100.5FM
Malone & Tate Builders
Mazzone Hospitality
McEnroe Organics
McPherson Photography
Mechanical Dynamics & Analysis
Media Logic
Midas - The Kent Smith Group
Mix 97.7
Mohonk Mountain House
National Beef Packing Company
One Day Signs
Chef Ric Orlando, New World Home Cooking
Otisville Correctional Facility
Ralph F. Passono Jr., UncleSamAuctions.com
Patron Land Foundation
Pepsi Cola of the Hudson Valley
Michael R. Phinney - Phinney Design Group
Port Royal Sales
POSTMTKG and Ron Ladouceur
Price Chopper/Market32
Dominick Purnomo, dp an American Brasserie
Chef Carlos Rivera, Mazzone Hospitality
Rocking Horse Ranch
Mike Roth
Chef Paul Rother, 3 Ball BBQ
The Sagamore
Scarborough Fare
Schillinger Environmental Associates LLC
ShopRite
Siena College
Nafsika Stavis
Tableau Foundation
Times Union
TownSquare Media of the Hudson Valley
Treasury Wine Estates
Trinity Construction
UP Cold Connect
Vivian Photography
Wakefern Food Corporation
Walmart
Whiteman Osterman & Hanna
Tom and Anna Wolfe
WRGB CBS6
WNYT - News Channel 13
WYJB B95.5

Why I Give...

My son volunteered this past weekend, and I just wanted to say thank you. He had a great experience and I think he gained some insight into just how fortunate we are. It was a real eye opener for him.

-Robyn Scopetwolo, mother of Noah Scopetwolo-Rosen, Volunteer



Statement of Activities and Change in Net Assets Year Ended December 31, 2017

Public Support and Other Revenue

Public Support

Contributions	\$ 2,099,678
Commodities Contract - USDA	597,019
Community Supported Agriculture (CSA) Contracts	136,710
Fundraising/Direct Mail Appeals	1,779,439
Fundraising Events (net of expenses \$189,820)	691,626
Grants	191,982
Grants, Temporarily Restricted	356,753
Grants, Capital Campaign	355,425
Hunger Prevention Nutrition Assistance Program (HPNAP) Grant	1,371,697
Kids' Food Programs	75,384
United Way	46,368

Total Public Support

\$7,702,081

Other Revenue

Co-op Food and Paper Products Revenue	\$ 8,019,315
Shared Maintenance Revenue	1,154,272
Public Warehousing & Rental Income	69,936
Interest Income/Realized and Unrealized Gains	100,397

Total Other Revenue

\$ 9,343,920

Total Support and Other Revenue

\$17,046,001

Expenses

Co-Op Food and Paper Products	\$ 7,256,228
Salaries	3,918,622
Employee Benefits & Payroll Taxes	1,242,110
Agency Rebates	350,000
Building Operation Expenses	76,688
Conference Fees	9,367
Consulting/Professional Fees	99,015
Equipment Repair & Maintenance	173,469
Feeding America Membership	20,186
Fundraising Appeals Expenses	276,940
HPNAP	620,048
Insurance	157,880
Membership Fees	14,259
Printing & Publications	46,850
Postage	48,427
Staff Travel	13,530
Supplies	205,478
Telephone	27,817
Transportation-Commercial	42,721
Utilities	245,785
Vehicle Expenses	435,516
Waste Disposal	201,118
Miscellaneous	124,973
Depreciation	627,210

Total Expenses

\$16,234,237

Change in Net Assets

\$811,764

Why I Give...

I enjoy serving the community. It's a blessing to be a blessing to others. There are many needs out there, and it can be overwhelming to know where to begin. I suggest just starting somewhere. The Food Bank is a great place to start!

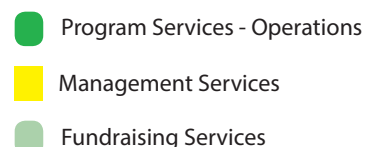
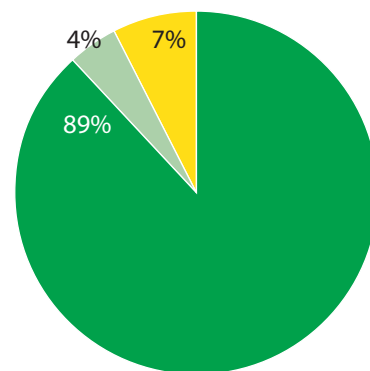
-Deb Karius, Volunteer

Expenses by Function

Program Services - Operations: \$14,390,581

Management Services: \$1,174,401

Fundraising Services: \$669,255



member agencies

Albany

Addiction Care Center of Albany
Albany County Opportunity, Inc.
Albany Damien Center
Albany Leadership Charter High School
Alternative Living Group
Alliance for Positive Health
Alpha Pregnancy Care Center
Altamont Community Food Pantry
Altamont Programs
American Red Cross of NENY
Arbor Hill Community Center
Beth Emeth Soup Kitchen
Bethlehem Food Pantry
Blessed Sacrament Food Pantry
Blessings Jermain Day Care Center
Bright Horizons
Brighter Choice Charter Schools
CACC Emergency Overflow Shelter
Capital Area Peer Services
Capital City Rescue Mission
Cathedral Social Service
Catholic Charities
Christ our Light Catholic Church
Cohoes CAP Pantry (ACAP)
Cohoes Child Development Center
Cornell Cooperative Extension
Early Childhood Education Center
Equinox Programs
First Church in Albany
First Lutheran Church - Community Dinner
FOCUS Feeding Programs
Food Pantries for the Capital District
Friendship Table
Grace and Holy Innocents Soup Kitchen
Hilltowns Community Resource Center
Holy Trinity Parish Food Pantry
Homeless Action Committee SRO
Homer Perkins Center
Hospitality House, T.C. Inc.
Immaculate Heart of Mary Pantry
In Our Own Voices
Interfaith Partnership for the Homeless
Islamic Center of the Capital District (ICCD) Food Pantry
Israel AME Church Lunch Program
Life for the Nations Church Food Pantry
Living Resources, Inc.
Marillac Shelter
Mary's Corner
Mary's Soup Kitchen
Mater Christi Food Pantry
Mercy House
Mohawk-Hudson Humane Society
Mt. Moriah Pantry and Soup Kitchen
My Father's House Produce Program
New Horizons Christian Church Food Pantry
New Scotland Community Food Pantry
Onesquethaw Reformed Church Pantry
Parsons Child and Family Center
PAWS Program – Albany Damien Center
Potter Hollow Food Pantry
Pride Center for the Capital District
Refugee and Immigrant Support Services, Inc.
Richard J. Connors Veterans Home
Rehabilitative Support Services
Sacred Heart Food Pantry
Salvation Army - Albany Pantry and Soup Kitchen
Salvation Army - Cohoes Pantry
Samaritan Shelters
Senior Projects of Ravena
Shalom Food Pantry
Sheridan Hollow Drop-In Center
Sister Maureen Joyce Center Pantry and Soup Kitchen
St. Ambrose Food Pantry
St. Anne Institute
St. Charles Lwanga Center
St. Clare's Food Pantry
St. James Food Pantry
St. John's St. Ann's Pantry and Soup Kitchen
St. Mary's Outreach
St. Patrick's Food Pantry
St. Vincent DePaul Church
Sweet Pilgrim Baptist Soup Kitchen
The CCLC Help Center
The Next Step
The Redeemed Christian Church of God Food Pantry
Trinity Institution
Trinity Nursery & Day Care Center
Trinity United Methodist Church Food Pantry
United Church of Cohoes Pantry and Soup Kitchen
Venture Churches Food Pantry
Veteran House
Victory Christian Church
Whiskers, Inc.
Wildwood Programs

Clinton

Behavioral Health Services North
Champlain Home for Children
Joint Commission on Economic Opportunity
Moore's Wesleyan Food Pantry
Plattsburgh Interfaith Food Pantry
Salvation Army - Plattsburgh Pantry and Soup Kitchen
St. Alexander's/St. Joseph's Soup Kitchen

Columbia

Alight Pregnancy Care Center
Alliance for Positive Health
Berkshire Farm Center
Catholic Charities of Columbia/Greene
Charlie's Pantry
Chatham Area Silent Pantry
Church of St. Joseph Food Pantry
Columbia County Domestic Violence Shelter
Columbia Opportunities Inc. Programs
Elizaville Food Pantry
First Presbyterian Summer Lunch
Germantown Community Cupboard
Ghent Food Pantry
Hudson Day Care Center, Inc.
Hudson Department of Youth Afterschool
Hudson Terrace Apartments
In Flight Inc.
Mellenville Philmont Food Pantry
Mental Health Association of Columbia-Greene
Neighbors Helping Neighbors Food Pantry
Rock Solid Church Food Pantry
Salvation Army - Hudson Pantry and Soup Kitchen
Twin County Recovery Services/Red Door
Valatie Ecumenical Food Pantry
Zion Community Food Pantry

Delaware

Christmas Feeling Fund
Delaware County ARC
Delaware Opportunities
Readburn Our Daily Bread
Rehabilitative Support Services
St. Paul's Free Lunch Program
Stamford Sacred Heart Food Pantry
Walton Food Pantry

Dutchess

Berkshire Farm Dutchess Group Home
Beulah Baptist Church Soup Kitchen
Center of Compassion Feeding Programs
Children's Home
Community Family Development
Community Resource Service Center
Daytop Village Inc.
Dutchess Community Action Program
Dutchess Outreach
Ebenezer Baptist Church Food Pantry
Exodus Transitional Community
First Presbyterian Church of Wappingers Falls
Meal Programs
Fishkill Food Pantry
Food of Life Pantry
Gannett House
God's Helping Hands Food Pantry
Grace Smith House
HLPC Missions Supper Kitchen
House of Faith Ministry, Inc.
Hudson Valley Community Services
Hyde Park Food Pantry
Jayne Brooks Memorial Food Pantry
Jewish SA Coalition
Joseph's House Poughkeepsie
Love Reaches Out Food Pantry
Mid-Hudson Addiction Recovery Centers, Inc.
New Hope Manor Community Residence
No Strings Attached Food Pantry
Nubian Directions II, Inc.
Pathstone
Pine Plains Community Food Locker
Pleasant Valley Ecumenical Food Pantry
RCCG Restoration Arena Food Pantry
Reach Out and Touch Food Pantry
Reach Out Food Pantry
Red Hook United Methodist Church Food Pantry
Rhinebeck Reformed Church Food Pantry
River Haven I.L.S. Food Pantry
River Haven
Safe Haven Pet Food Pantry
Salvation Army – Beacon
Salvation Army – Poughkeepsie
Special Needs Parenting Program
St. Columba Church Food Pantry
St. Paul's Poughkeepsie Food Pantry
St. Vincent De Paul Society
St. Andrew's/St. Luke's Food Pantry
The Potter House Food Pantry
Trinity Temple Food Pantry
Trinity United Methodist Church Food Pantry
Verbank Holiday Basket Program
Webster House
Zion Episcopal Church Food Pantry

Essex

Adirondack Community Action Program
Community Food Shelf
Jay Wilmington Ecumenical Food Pantry
Lake Placid Ecumenical Food Pantry
Minerva Food Pantry
N. Elba Community Lunch
Schroon Lake Food Pantry
Ticonderoga Food Pantry
Town of Moriah Food Pantry
Westport Food Shelf

Franklin

Behavioral Health Services North
Bombay Food Pantry
Brandon Wesleyan Food Pantry
Brushton-Moira Food Pantry
Catholic Community Constable
Chateaugay Food Pantry
Citizen Advocates
Community Lunch Box - Saranac
Community Supper - Soup Kitchen
Dickinson Food Pantry
First Baptist Church Malone Food Pantry
Fort Covington Helping Hands
Good Samaritan Food Pantry
Grace Pantry
Joint Commission on Economic Opportunity
Lifeway Neighborhood Food Pantry
Moira New Hope Food Pantry
Saranac Lake Interfaith Food Pantry
St. Joseph's Addiction Treatment and Recovery Centers
St. Paul's Assumption Vermontville
Town of Bellmont Food Pantry
Tupper Lake Community Pantry
Waverly Food Pantry

Fulton

1st Congressional UCC-Gloversville FP
Berkshire Farm Center
Broadalbin Ecumenical Food Pantry
Catholic Charities of Fulton County
Community Free Meals - NOAH
First Pres Fellowship Meals - Johnstown
Foothills United Methodist Church Food Pantry
Friday's Table – Church of the Holy Spirit
Fulmont Community Action
Fulton County Family Violence
Gloversville Free Methodist Food Pantry
James A Brennan Memorial Humane Society
Johnstown Churches Council Food Pantry
LifeSaver Ministries
Mayfield Presbyterian Food Pantry
Mental Health Association of Fulton and Montgomery Counties
North Main St. United Methodist Church Pantry
Salvation Army - Gloversville Pantry and Soup Kitchen
The Gathering
The Manor Community Residence
Victorian Manor

Greene

Athens Community Food Pantry
Cairo Food Pantry
Catholic Charities Columbia Greene – Catskill Pantry
Community Action of Greene County
Coxsackie Community Pantry
God's Storehouse
Greene County Domestic Violence
Greenville Food Pantry
High Hill Food Pantry
Hope's Mission
In Flight Inc.
Jewett Food Pantry
Matthew 25 Feeding Programs
Mental Health Association of Columbia and Greene Co.
Prattsville Community Church Food Pantry
Twin County Recovery - Catskill
Ulster-Arc ARC
Village Greene Apts.-Closed Pantry
Windham Community Food Pantry

Hamilton

Indian Lake NOC Food Pantry

Montgomery

Alpha Pregnancy Care Center
AMEN Place Soup Kitchen
Amsterdam Calvary Food Pantry
Catholic Charities Food Pantry
Domestic Violence Services
Fonda Food Pantry
Fulmont Community Action
Haven of Hope Farm and Residence
Mental Health Association of Fulton and Montgomery Counties
Montgomery Co. Office for the Aging, Inc.
NYS Children's Foundation
Salvation Army Helping Hands Food Pantry
The Comfort Zone

Orange

Access: Supports for Living Food Pantry
Alamo Farmworkers Community Center
American Red Cross-Emergency Services
Baby Steps Baby Pantry
Backpack Snack Attack
Boys & Girls Club of Newburgh
Braeside Camp
Bridges of Greater New York
Chester Presbyterian Pantry
Community Emergency Food Center
Cornerstone Family Healthcare
Cornwall Presbyterian Church
Country Kids 4H Food Pantry
Crystal Run Village, Inc.
Easter Seals Food Pantry
Ebenezer Baptist Church Soup Kitchen
Ebenezer Baptist Food Pantry
Emergency Housing Adult Shelter
Exodus Transitional Community – Newburgh

Faith Tabernacle Feeding Programs
Family Empowerment Council Food Pantry
Fed By Grace Food Pantry
First Assembly of God Food Pantry
First Haitian COG Food Pantry
First Presbyterian Church
Florida Community Food Pantry
Good Samaritan
Goshen Ecumenical Pantry, Inc.
Grace United Methodist Food Pantry
Greenwood Lake Food Pantry
Guild of St. Margaret Soup Kitchen
Holy Deliverance Apostolic Temple Food Pantry
Holy Innocents Food Pantry
Holy Name of Jesus Food Pantry
HONORehg
Hope Center Food Pantry
Humane Society of Walden
HVCC Food Cupboard
Kids Club Snacks
Kiryas Joel Community Council
Life Restoration Church – Food Pantry
LINKS Aftercare Program
Middletown Addiction Crisis Center
Newburgh Tabernacle Feeding Programs
Operation Compassion Food Pantry
Orange ARC
Orange County Veteran's Food Pantry
Our Father's Kitchen
Pathstone
Pine Bush Ecumenical Food Pantry
Project L.I.F.E.
RECAP
Safe Homes of Orange County
Salvation Army – Middletown
Salvation Army – Newburgh
Salvation Army – Port Jervis
Seventh Day Adventist Food Pantry
Shepherd's Kitchen
Soul Saving Station
St. Francis of Assisi Parish Food Pantry
St. George's Church Food Pantry
St. Mary's Food Pantry
St. Mary's Outreach/St. Vincent DePaul
St. Patrick's Soup Kitchen
St. Paul's Mission
St. Peter's Lutheran Church Food Pantry
Stephen Saunders Residence
The Center for Recovery
TOUCH Nutrition Program
Town of Montgomery Food Pantry
Trinity House Food Pantry
Union Presbyterian Church Food Pantry
Valley Central Backpack Snack Attack
Walden Rose House
Warwick Community Bandwagon
Warwick Community Kitchen
Warwick Ecumenical Food Pantry
Youth Advocate Programs, Inc.

Otsego

Butternut Valley Food Pantry
Cooperstown Food Pantry
Hartwick/Mt. Vision Food Pantry
Maryland Baptist Church Food Pantry
Milford Food Pantry
Opportunities for Otsego Programs
Otsego Community Food Pantry
Richfield Springs Food Pantry
Rehabilitative Support Services
Salvation Army - Oneonta Pantry and Soup Kitchen
Saturday's Bread at First United Methodist Church
St. James Food Pantry
St. Mary's Church Food Pantry
The Lord's Table
Tri Valley Food Pantry
Unadilla Community Food Pantry
Worcester Food Pantry

Putnam

Brewster Community Food Pantry
Delancey Street Foundation
Gilead Food Pantry
Green Chimneys
Hillside Food Outreach
Patterson Presbyterian Food Pantry
Phillipstown Food Pantry
Putnam Community Action Program
Putnam Valley Community Food Pantry
Salvation Army – East Putnam Food Pantry
San Damiano Residence
St. Christopher's Inn
St. John the Evangelist Food Pantry
Walter Hoving Home
Women's Resource Center

Rensselaer

820 River Street Programs
Boys and Girls Club - Lansingburgh
Boys and Girls Club - Rensselaer
Boys and Girls Club - Troy
Brunswick Cares Food Pantry
Butterfly Wings, Inc.-Non-Food Pantry
Camp Scully
Catholic Charities
CONSERNS-U
Continuing Treatment Services
Doors of Hope

Faith and Love Fellowship Food Pantry
 Hoosick Area Church Association Food Pantry
 Hope 7 Community Center
 Hudson Mohawk Recovery Center
 Italian Community Center Soup Kitchen
 Joseph's House
 Living Resources, Inc.
 Mt. Ida Food Pantry
 Mt. Ida Community Baptist Church Meal
 Nassau Resource Center
 Pittstown Area Food Pantry
 Provisions Food Pantry/Victorious Life Church
 REACT, Inc.
 Rensselaer County CEO Food Pantry
 Roarke Center
 Salvation Army - Troy Pantry and Soup Kitchen
 St. Augustine's Food Pantry
 St. Joseph's Church Troy
 St. Paul's Center
 Stephentown Emergency Food Pantry
 The Anchor
 The Gathering Place
 TLP Food Pantry
 Troy Damien Center
 Unity House Programs
 Wildwood Programs
 YWCA - Pantry and Soup Kitchen

Rockland

Beth Rapha's Outreach Program
 B.R.I.D.G.E.S.
 Capabilities Partnership Food Pantry
 Catholic Community Services of Rockland
 Center for Safety and Change
 Charismatic Church Outreach Food Pantry
 Christ Church of Ramapo Soup Kitchen
 Crystal Run Village, Inc.
 Fairmount Baptist Church Food Pantry
 Faith Temple Food Pantry
 French Speaking Baptist Church Food Pantry
 Good Counsel Homes
 Haverstraw Parent Group Food Pantry
 Hudson Valley Community Services
 Iglesia La Mision Food Pantry
 Immaculate Conception Care & Concern Ministry
 Loeb House, Inc.
 Macedonia Baptist Food Pantry
 Mental Health Association of Rockland
 MLK Multipurpose Center
 North Rockland Food Pantry - Trinity United Methodist
 Nyack F.O.O.D. Program
 Nyack Headstart
 Nyack Parent Group Food Pantry
 Open Bible Church Food Pantry
 People to People Food Pantry
 Pilgrim Baptist Church
 Project Hope Food Pantry
 Ramapo All Nations
 Redeeming Love Community Outreach
 Rhoda Bloom Food Pantry
 Rockland Community College Food Pantry
 Rockland Interfaith Breakfast
 Salvation Army – Spring Valley Food Pantry
 Sinai French SDA Community Services Food Pantry
 Sloatsburg Food Pantry
 Spring Valley Headstart
 Spring Valley SDA Church Food Pantry
 St. Ann's Food Cupboard
 St. John Deliverance Tabernacle, Inc. Food Pantry
 St. Paul's Episcopal Church
 St. Paul's Parish Pantry
 St. Peter's Food Pantry
 St. Stephen's Episcopal Pantry
 STL Foundation, Inc.
 Summit Children's Residence
 Tomche Shabbos of Rockland County
 TOUCH
 United Methodist Church of Spring Valley
 Upper Room House of Worship Food Pantry
 West Street Parent Group Food Pantry
 Westcop - Rockland Community Action Program

Saratoga

Adirondack Save-A-Stray
 Backstretch Employee Service Team (B.E.S.T.)
 Bright Horizons
 CAPTAIN Programs
 Catholic Charities Programs
 Christ Church Food Pantry
 Christ's Cupboard
 Corinth Community Cupboard
 ECHO Food Pantry
 Faith Baptist Church Pantry
 Franklin Community Center
 Grace Church Food Pantry
 Greater Galway Food Pantry
 Greenfield Center Food Pantry
 Harvest Church Food Pantry
 Living Hope United Methodist Food Pantry
 Living Resources, Inc.
 Mechanicville Emergency Food Pantry
 Moreau Community Center Pantry
 New Journeys Social Day Program
 Pine Knolls Alliance Church
 Veterans & Community Housing Coalition

SACC-School Aged Child Care
 S.A.F.E.R. Food Pantry and Backpack Program
 Saratoga EOC Feeding Programs
 Salvation Army of Saratoga Programs
 Shelters of Saratoga
 Shenendehowa Helping Hands Food Pantry
 SNACpack Program, Inc. Backpack
 St. Clement's Outreach Food Pantry
 St. Mary's/St. Vincent/Waterford
 St. Paul's Saratoga Food Pantry
 Stillwater Food Pantry and Backpack Program
 Support Ministries, Inc.
 The Upper Room Thrift Shop Food Pantry
 Transitional Services Association Programs
 Wellspring
 Wilton Food Pantry

Schenectady

Alternative Living Group
 Alliance for Positive Health
 Alpha Pregnancy Care Center
 Altamont Programs
 Animal Protective Foundation
 Bethesda House of Schenectady
 Boys & Girls Club - Schenectady
 Braman's Hall Food Pantry
 Bread of Life Food Pantry-Rotterdam
 The Bridge Food Pantry
 Catholic Charities Programs
 City Mission of Schenectady
 Concerned for the Hungry
 Downtown Community Breakfast Program
 Early Childhood Education Center - Schenectady
 Family Life Center
 Gathered Remnant Ministries Food Pantry
 Girls Inc.
 Harmony Food Pantry
 Lighthouse Food Pantry
 Living Resources, Inc.
 Mohawk Opportunities, Inc.
 New Choices Programs
 Oak Hill School
 Our Lady of Fatima Food Pantry
 Parsons Child and Family Center
 Raindrops Closet
 Safe House
 Salvation Army - Schenectady Programs
 Schenectady Community Action Program
 Schenectady County Community College Food Pantry
 Schenectady Day Nursery
 Schenectady Guest House
 Schenectady Home Furnishings
 Scotia Glenville Food Pantry
 Schenectady Inner City Ministries
 Soap Ministry of First United Methodist Church
 St. Luke's Food Pantry
 State Street Food Pantry
 The Bridge Food Pantry
 Things of My Very Own
 Trinity Baptist Church Food Pantry
 Wildwood, Inc.
 X-Quest, Inc.
 YWCA of Schdy

Schoharie

Afterschool Tutoring Program
 Catholic Charities-Schoharie
 Cobleskill United Methodist Food Pantry
 First Baptist Church Pantry
 Good Samaritan Food Pantry-Summit
 Jefferson United Methodist Church Pantry
 Keith Nelson Food Pantry
 Middleburgh Ecumenical Food Pantry
 North Blenheim United Methodist Pantry
 Schoharie County Domestic Violence Program
 Schoharie County Community Action Program
 Schoharie County Head Start
 Schoharie Community Food Pantry
 Schoharie Prevention Programs
 St. John's Monastery Food Pantry
 St. Mark's Lutheran Food Pantry
 St. Paul's Richmondville Food Pantry
 Zion Food Pantry

Sullivan

Bread of Life Food Pantry
 Catholic Charities
 Claryville Church Food Pantry
 Community Church of Wurtsboro
 Crystal Run Village
 Dynamite Youth Center
 Federation Feeding Programs
 First Presbyterian Church of Jeffersonville
 HVCS, Inc. – Monticello
 Joseph's Storehouse Food Pantry
 Livingston Manor UMC Food Pantry
 New Hope Manor
 Our Lady of the Assumption Pantry
 Roscoe Shepherd's Pantry
 St. Andrew's Mission Pantry
 St. John's Caring Hands Food Pantry
 St. Peter's Liberty Food Pantry
 The Blessing Food Pantry
 The Shepherd's Food Pantry
 White Sulphur Springs UMC Food Pantry

Ulster

Angel Food East, Inc.
 Ascension Holy Trinity Food Pantry

Bread of Life Food Pantry
 Calvary Chapel Feeding Programs
 Caring Hands at Clinton Ave
 Catholic Charities of Kingston
 Centerville UMC Personal Care Pantry
 Children's Home of Kingston
 Chiz's Heart Street
 Ellenville UMC Pantry
 Family of Woodstock Programs
 Family Outreach Food Pantry
 Four Paws Food Pantry
 God Given Bread
 Good Neighbor Food Pantry of Woodstock, Inc.
 Happy to Help Food Pantry
 Heavenbound Food Pantry
 Helping Hands Ministry
 His Love Unveiled Food Pantry
 Holy Ascension Monastery Pantry
 Hosanna Assembly of God, Inc.
 Hunger Is Not An Option Food Pantry
 In Flight, Inc.
 KCCOG 7th Day Food Pantry
 Loaves and Fishes Food Pantry
 New Day Food Pantry
 People's Place
 Phoenicia UMC Food Pantry
 Pine Bush Ecumenical Food Pantry
 Plattekill Food Pantry
 Pointe of Praise Food Pantry
 Pregnancy Support Center of Ulster
 Reservoir Food Pantry
 Rochester Food Pantry
 Rondout Valley Feeding Programs
 Rosendale Food Pantry
 Rehabilitation Support Services
 Salvation Army – Kingston
 Samaritan Village
 Saugerties Area Council of Churches
 Shiloh Baptist Church Soup Kitchen
 Soldier On
 Snackin' Kidz Klub
 St. Augustine Parish Food Pantry
 St. John the Evangelist Church
 St. Joseph's Food Pantry
 St. Joseph's Social Ministry Food Pantry
 St. Mary's Rectory Food Pantry
 Student Christian Center Food Pantry
 The Washbourne House Programs
 Transformation Life Center, Inc.
 United Cerebral Palsy of Ulster County
 Ulster Co. Community Action Programs
 Ulster Heights Methodist Church
 Ulster-Greene ARC
 Wings on Wheels Mobile Pantry

Warren

820 River Street Programs
 Alliance for Positive Health
 Chestertown Food Pantry
 Community Workshops, Inc.
 Cornell Cooperative Extension of Warren Co.
 Domestic Violence Project
 Double H Hole in the Woods
 Family Services Association
 First Presbyterian Church-Warrensburg Pantry
 Johnsbury Food Pantry
 Lake George Food Pantry
 Maxfield Community Food Pantry
 North Country Ministries, Inc.
 Open Arms Pregnancy Center
 Open Door Soup Kitchen
 Sacred Heart Church Meal Programs
 Salvation Army - Glens Falls Pantry and Soup Kitchen
 St. Mary's Food Pantry- Glens Falls
 The Open Door Mission Back Pack Agency
 United Methodist Church of Queensbury Pantry
 Village Green Apartments
 Warren-Hamilton ACEO

Washington

820 River Street Programs
 Argyle Presbyterian Food Pantry
 Cambridge Food Pantry
 Comfort Food Community Food Pantries
 Cornerstone Outreach Center Food Pantry
 DSS Employees Food Pantry
 Fort Edward Community Food Pantry
 Hartford Food Pantry
 Kingsbury SDA Church Food Pantry
 MVEC Food Pantry
 Salem Food Pantry
 Washington Co. EOC Food Pantry
 Whitehall Community Food Pantry

School Districts with Backpack Programs

Albany
 Amsterdam
 Argyle
 Averill Park
 Ballston Spa
 Beacon
 Berne Knox Westerlo
 Bolton
 Brunswick-Brittonkill
 Burnt Hills
 Canajoharie
 Capital Region BOCES
 Chatham

Chester Union Free
 Cohoes
 Cooperstown
 Corinth
 Crown Point
 Duanesburg
 Edmeston
 Elizabethtown-Lewis
 Ellenville Central School
 Fort Edward
 Franklin
 Germantown
 Gilbertsville Mt. Upton
 Glens Falls
 Gloversville
 Green Island
 Greenville
 Greenwich
 Guilderland
 Hadley-Luzerne
 Hartford
 Highland Falls
 Hoosick Falls
 Hudson
 Hudson Falls
 Hyde Park
 Icabod Crane
 Johnsbury
 Johnstown
 Keeseville
 Kingston
 Lake Placid
 Lansingburgh
 Marlboro
 Mayfield
 Mechanicville
 Middleburgh
 Middletown
 Milford
 Minerva
 Moriah
 New Lebanon
 New Paltz
 Newburgh
 North Colonie
 North Warren
 Northern Adirondack
 Northern Rivers (School at Northeast)
 Oneonta
 Oppenheim Ephratah St. Johns
 Peru
 Plattekill
 Plattsburgh
 Port Jervis
 Poughkeepsie
 Ravena-Coeymans-Selkirk
 Red Hook
 Rensselaer
 Rhinebeck
 Richfield Springs
 Rockland BOCES
 Rondout Valley
 Saranac
 Saranac Lake
 Schalmont
 Schenectady
 Schenervus
 Schodack
 Schoharie
 Schroon Lake
 Scotia-Glenville
 Shenendehowa
 Sidney
 South Glens Falls
 South Kortright
 Stillwater
 Taconic Hills
 Ticonderoga
 Troy
 Unatego
 Voorheesville
 Warrensburg
 Washingtonville
 Watervliet
 Webutuck
 Wells
 Whitehall
 Worcester
 Washingtonville
 Webutuck
 Whitehall
 Worcester
 YMCA Adk Outreach Center

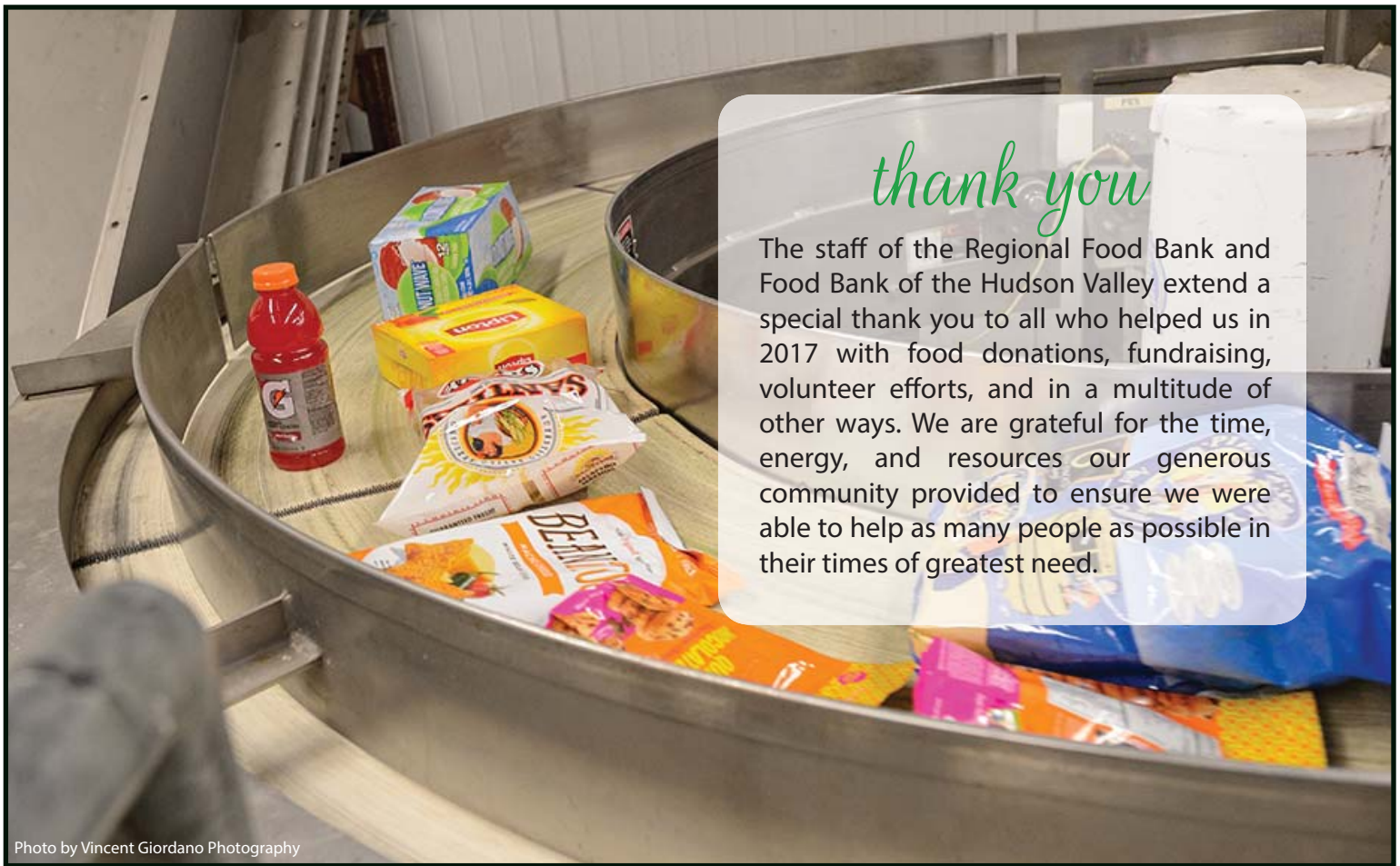


Photo by Vincent Giordano Photography

thank you

The staff of the Regional Food Bank and Food Bank of the Hudson Valley extend a special thank you to all who helped us in 2017 with food donations, fundraising, volunteer efforts, and in a multitude of other ways. We are grateful for the time, energy, and resources our generous community provided to ensure we were able to help as many people as possible in their times of greatest need.

how you can help

donate time and talent

Volunteers are vital to the Food Bank's operation and contribute in countless ways. Sorting food, picking produce at our Farm, or raising money at a fundraising event—there are endless varieties of enjoyable, rewarding tasks that volunteers perform every day.

make a monetary or in-kind donation

Financial donations sustain the Food Bank and enrich the larger community by providing nourishment, dignity, and a sense of sharing to all involved. Funds come from grants, special events, and contributions, and each donation makes a meaningful difference. In-kind donations come in many forms, from printing to paving and more. These donations allow the Food Bank to provide more food to hungry people.

donate food

Food donations are at the core of the Food Bank's work. Food companies donate their edible but unsaleable food, and individuals and organizations conduct food drives at all times of the year. Non-food items like paper goods and cleaning supplies are also donated. These products are provided to food pantries, soup kitchens, and other agencies serving people in need.

spread the word

Did you have a great time volunteering in our warehouse or on the Farm? Spread the word! Let your friends know, and encourage them to volunteer! Find us on Facebook, Twitter, and Instagram to keep up with what's going on at the Food Bank, and share our pages with your friends. With your help, we are alleviating hunger...together.



Regional Food Bank

OF NORTHEASTERN NEW YORK

965 Albany-Shaker Road
Latham, NY 12110
(518) 786-3691
www.regionalfoodbank.net

Food Bank *of the* Hudson Valley



195 Hudson Street
Cornwall-On-Hudson, NY 12520
(845) 534-5344
www.foodbankofhudsonvalley.org

A member of


FEEDING[®]
AMERICA